

PROVIDENCE LODGE




The house atop Oak Hill



Welcome to Providence Lodge,
built in 1979.

The deck was built in 1997, with
fresh rails and stain in 2007.

The light by the door is on a 7-
day programmable timer that is
built into the electronic switch.



These four (and eight other) windows are double-lifetime warranted – a transferable warranty for anything that happens to them.

The light is a motion-detector, illuminating when anything larger than a fox moves.

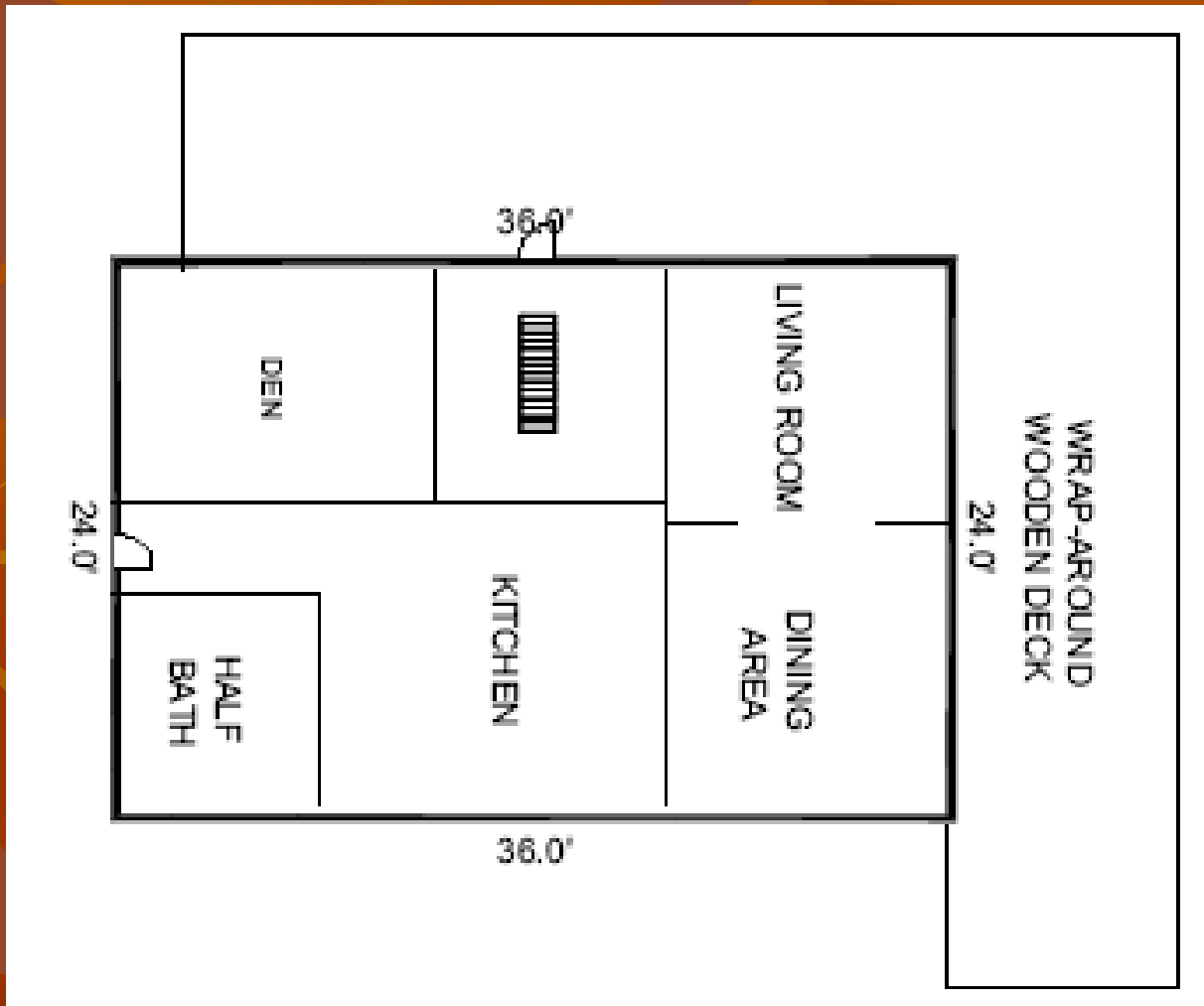
The oil tank fills here.

The back step was new in 2007, and the high-quality storm and ThermaTrue fiberglass entry door were new in 2006.

Outdoor water spigot.




Main Floor






Great Room



This Alpiner stove can heat the whole house itself and takes a 24" log. The new ceramic floors lighten up the space under the redwood stained 4"x10" pine beams and 2"x6" tongue-and-groove overhead planks. The ceramic tile is professionally laid on Hardibacker over 2"x6" tongue-and-groove planks.




The ThermaTrue fiberglass entry doors were new in 2006. This one has internal mini blinds. All windows on this floor, those in The Master Suite, and those in The Observatory are double lifetime full warranty windows – if anything goes wrong with them, call and they'll fix or replace it.

A lush green landscape with a large tree on the right, a grassy field, and a stone bench in the distance. The scene is framed by dense foliage and trees, creating a sense of a secluded, natural setting. The ground is covered in grass and various plants, including a prominent bush in the foreground on the left. The background shows a dense forest of trees under a bright sky.

We're not sure, but this may be Robert Frost's rock wall outside the office window. It is one of many on the property. There is a stone bench made from a granite slab above the wall with an inspiring view, and one of the many high-bush blueberry plants. This one has been good for about a gallon of berries.



New olive tone commercial grade carpet, a new ceiling fan/light, and a new high-efficiency warranted window grace the den/office/dining room – or this has been used as a main floor bedroom.

A photograph of a room, likely a cabin or a small apartment. On the left, there is a wooden cabinet with two doors and metal hinges. Below it, a white electrical outlet is visible. A long, light-colored coat rack is mounted on the wall, with several black hooks. A dark green jacket is hanging from one of the hooks. To the right, a doorway leads to another room, which appears to be a bathroom with a sink and a mirror. The floor is tiled, and there is a small green mat near the doorway. A green bench or table is in the foreground, with a pair of shoes on it. A black power strip is plugged into the outlet on the left.

The cabin-sitter alarm with passive infrared motion detector zones, high-sound alarm that picks up the wired smoke alarms, and high- or low-temperature alarms will place up to 4 phone calls if triggered. It also can control a switchable circuit by your phone call. You can change from the “away” thermostat to the “home” thermostat by telephone to raise the temperature so the house is warm when you arrive. Both thermostats on this zone are electronic 7-day programmable units.




A new sink, new countertops, dishwasher, lighting, and the ceramic tiles are visible here. Inside the cabinet is a dual-bin slide-out rack for trash and recycling.



We took out a wall, did away with the back entry hall, and opened up what was a galley kitchen (the sink was where the fridge is) for an open helper-friendly country kitchen.

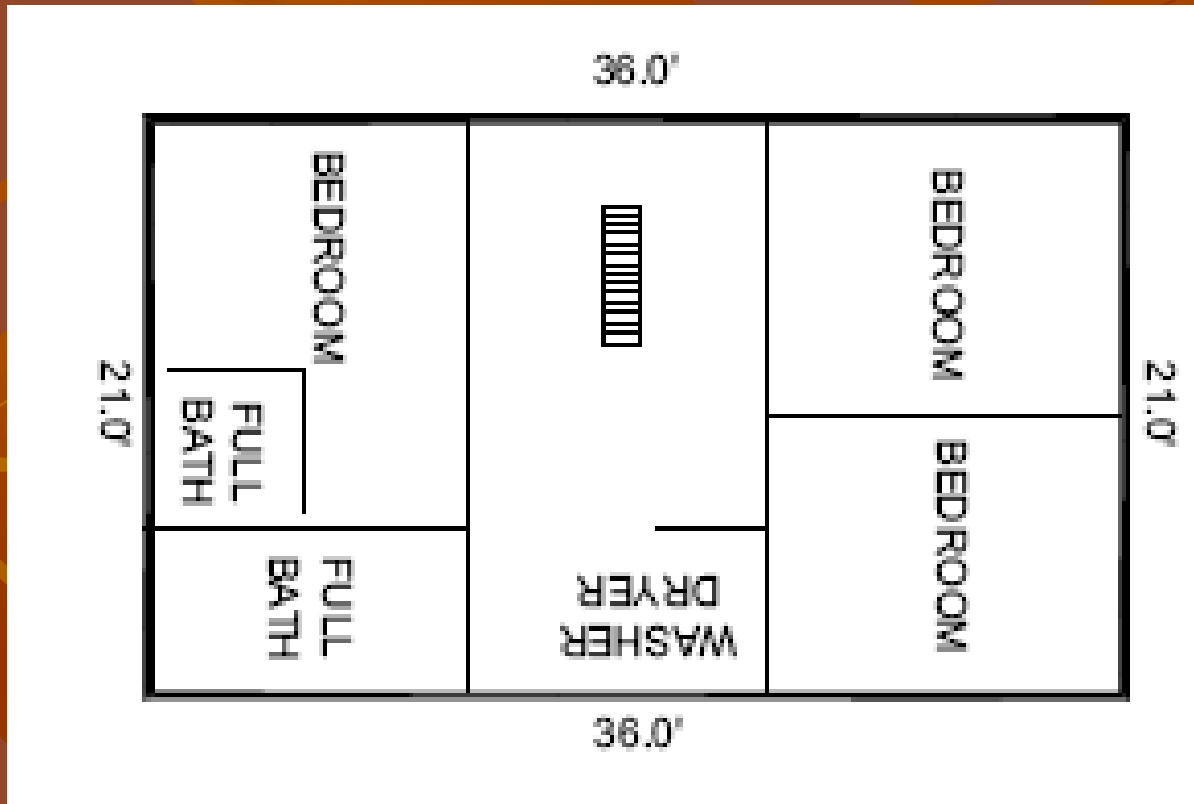




Furnace cutoff, wired smoke alarm, basement door with built-in pet door, and pantry.



2nd Floor





Happy colors, truck and tool murals, new neutral carpet, and a ceiling fan make this a great boy's room – or construction company office! (This can be re-painted, but we left the artist's work just in case it may be appreciated.)



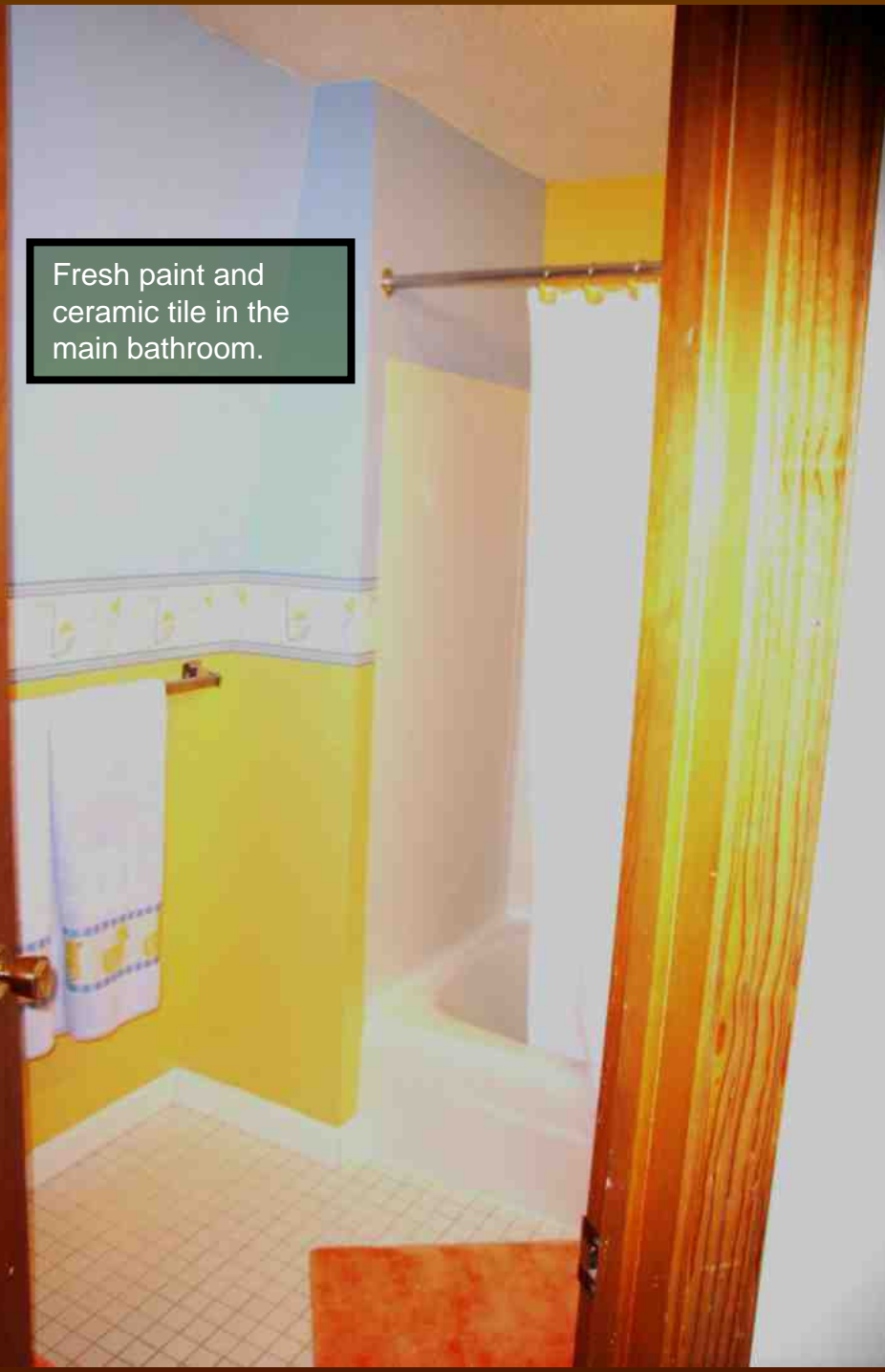
A closet on the left and the door on the right opens to the linen closet and stair down (with its commercial-grade olive-tone carpet) from the 2nd floor in this warm west bedroom.



Hand-painted murals!



Fresh paint and ceramic tile in the main bathroom.

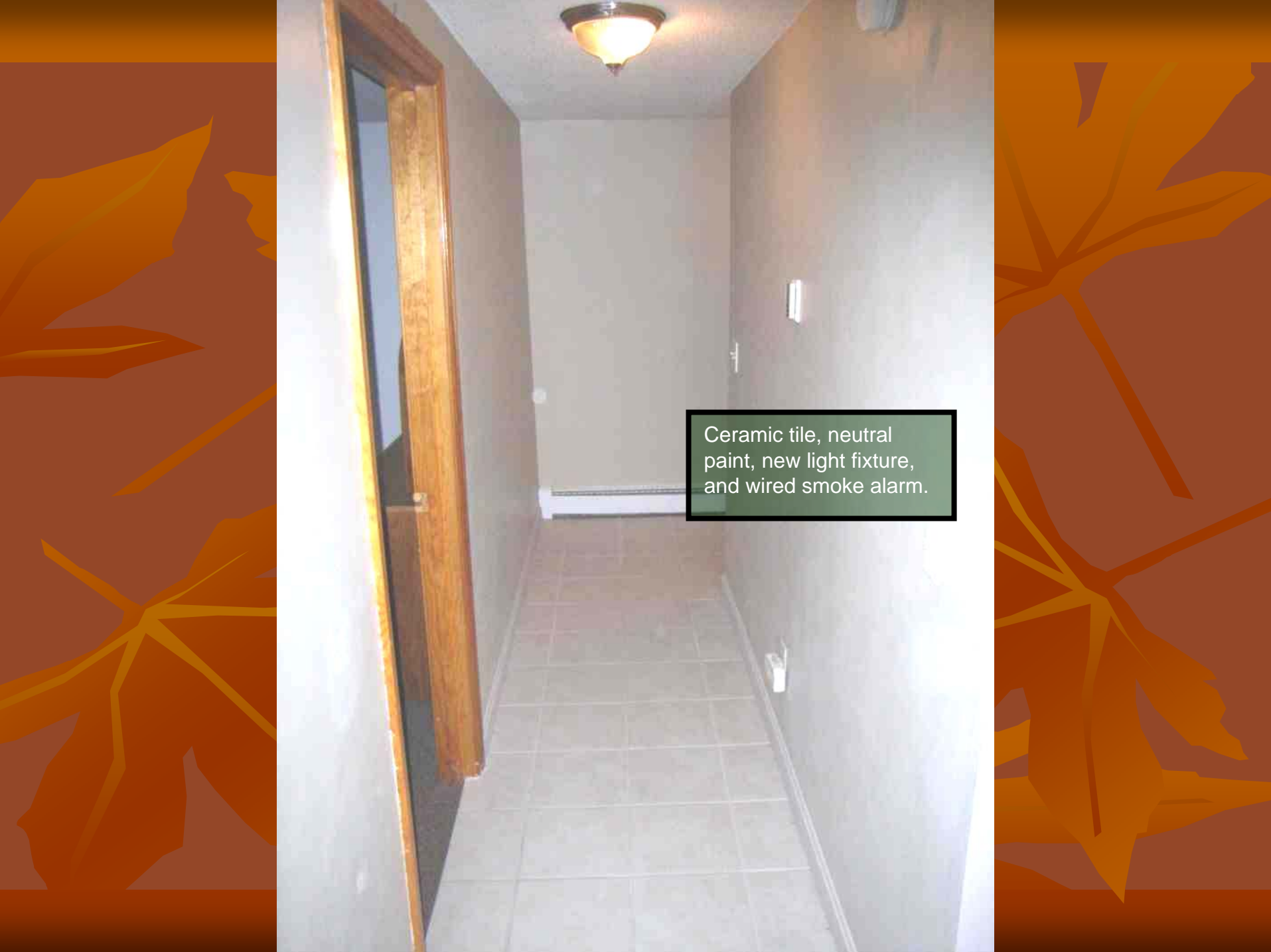




Lighted large Vanity
Mirror and Pedestal Sink



New commode and
cabinets

A photograph of a narrow hallway with light-colored ceramic tile flooring and neutral-colored walls. A wooden door frame is visible on the left side. A new light fixture is mounted on the ceiling, and a wired smoke alarm is visible on the wall. A text box in the center of the image provides details about the renovation work.

Ceramic tile, neutral paint, new light fixture, and wired smoke alarm.


Front-load high efficiency washer and dryer (both Kenmore) convey in this back-lighted ceramic floor laundry area.





Serene view of backyard hilltop acreage through the new warranted low-E window, new ceiling fan/light, fresh paint, and new commercial-grade olive-tone carpet in the Master Bedroom.






New ceramic tile, new light fixture, new window, fresh paint, new commode, and new glass shelves in the Master Bath.

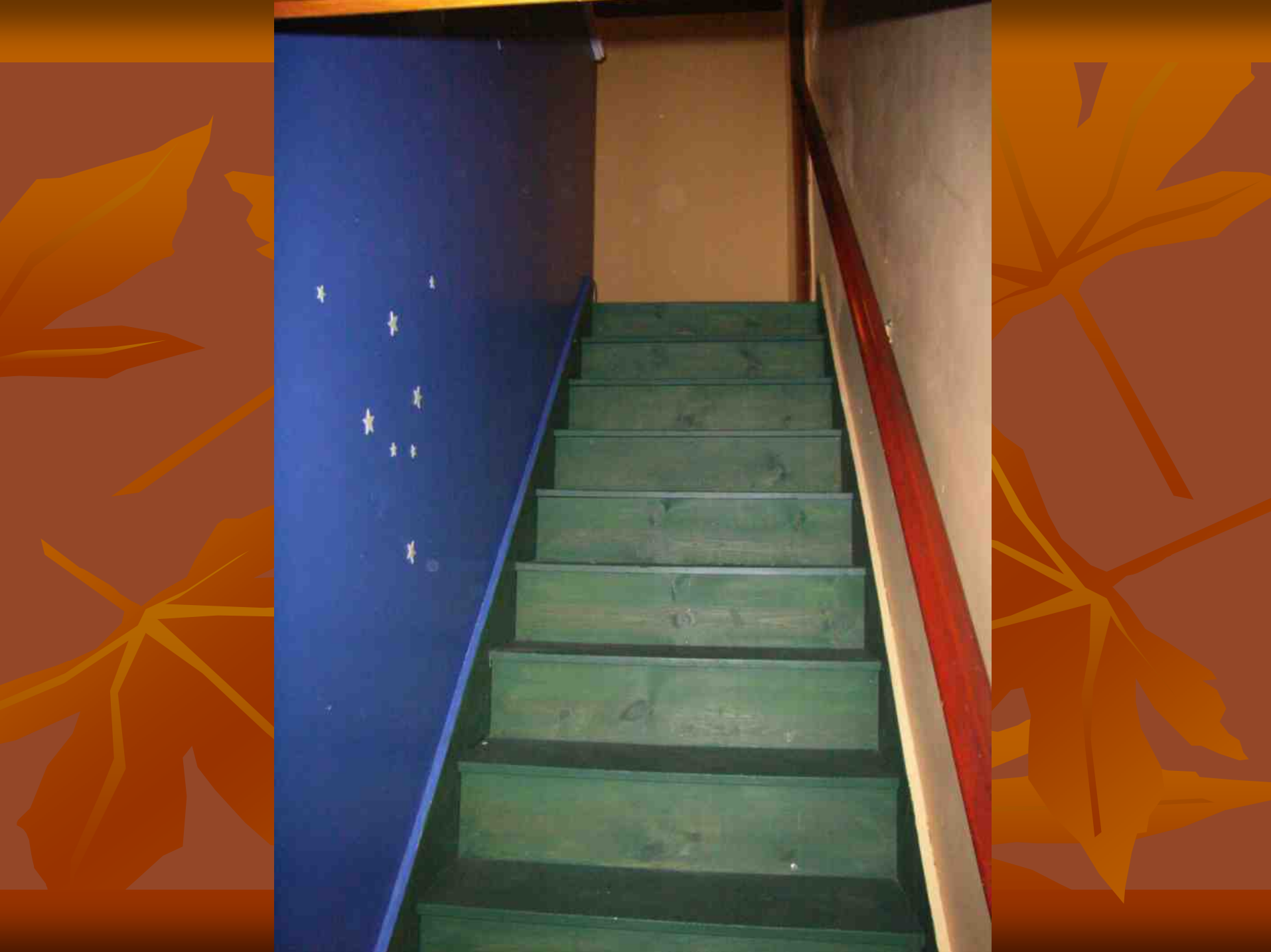




New carpet, fresh paint, and new ceiling fan/light in this bright bedroom with south and east windows.

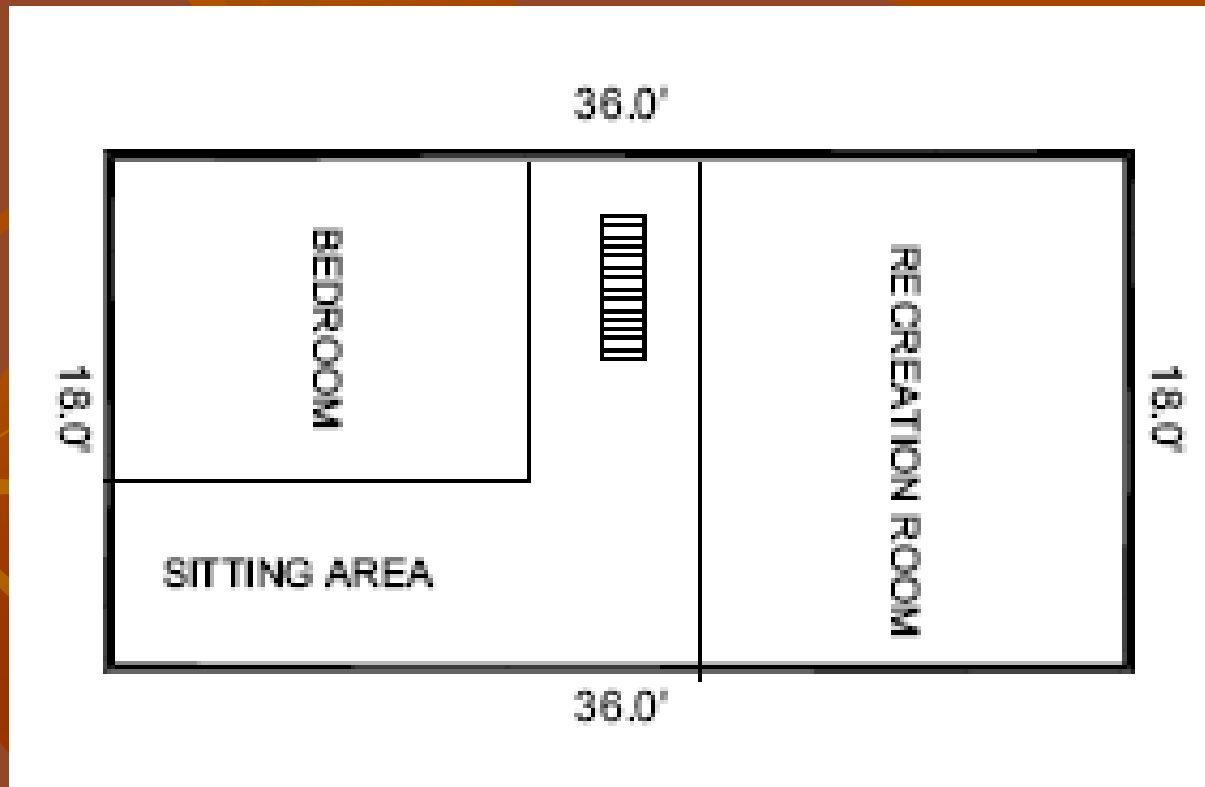


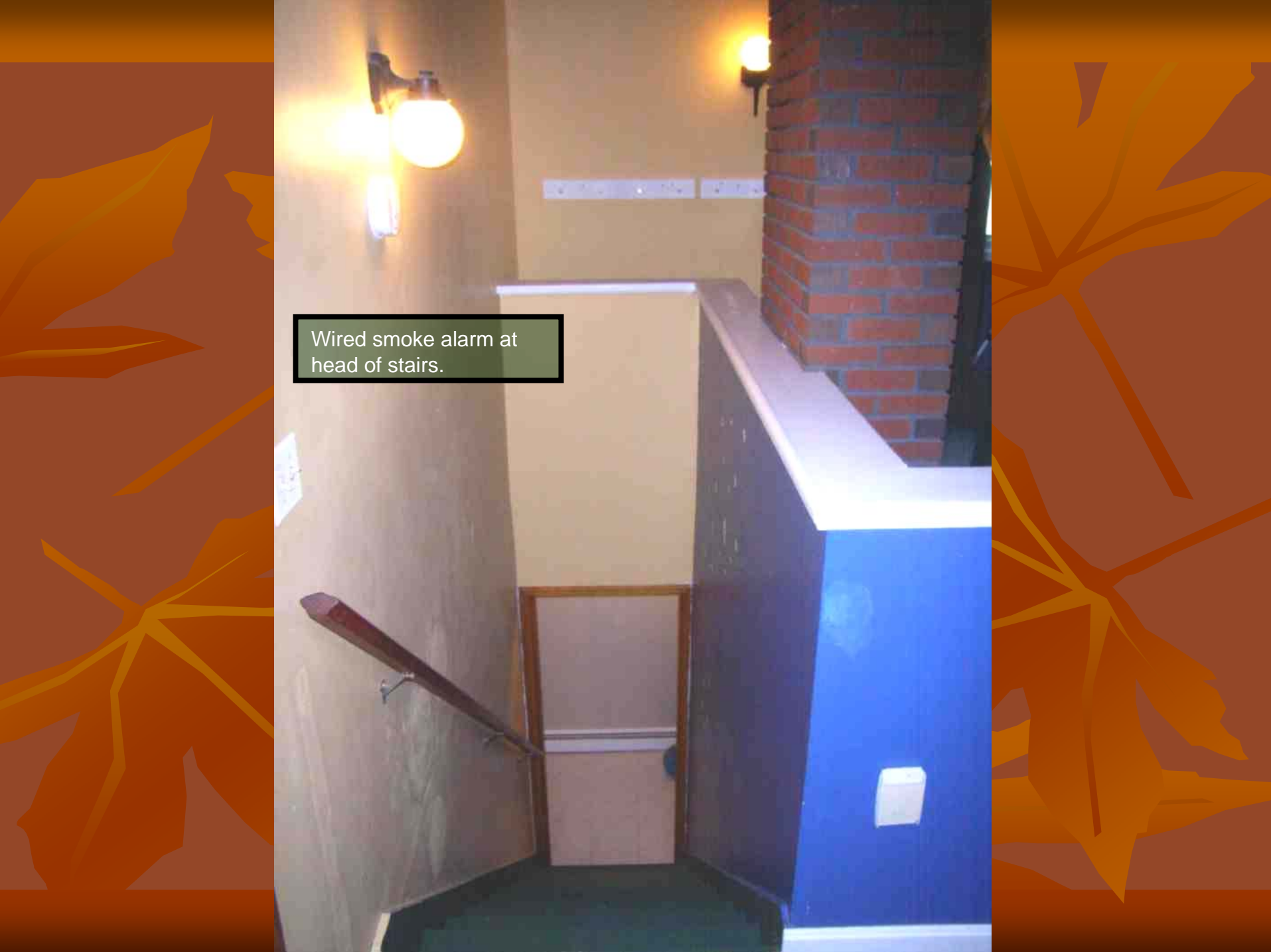
Hand painted murals decorate each of the two closets flanking the hallway door. Just outside the door on the left is the stair to the 3rd floor.






3rd Floor






Wired smoke alarm at head of stairs.

A photograph of a hallway with a brick pillar and a wooden ceiling. A text box is overlaid on the image. The hallway has a light-colored wall on the left with a wall-mounted light fixture. A brick pillar is on the right. The ceiling is made of dark wood. A person is partially visible in the background on the right.

This begins a
clockwise trip
around the
cathedral
ceiling...

The image shows the interior of an observatory. A prominent feature is the cathedral ceiling, which consists of large, dark wood timbers supporting a layer of pine planks. On the left, a thick brick pillar stands vertically. In the center, a telescope is mounted on a tripod, positioned in front of a window with a blue cover and a small curtain. To the right, there is a white cabinet and a wall-mounted light fixture. The floor is covered with a green patterned carpet. The entire scene is framed by a decorative orange background with stylized leaf patterns.

Cathedral ceiling in the observatory is 4"X10" fir timbers supporting 2"X6" tongue-and-groove pine planks – solidly beautiful.

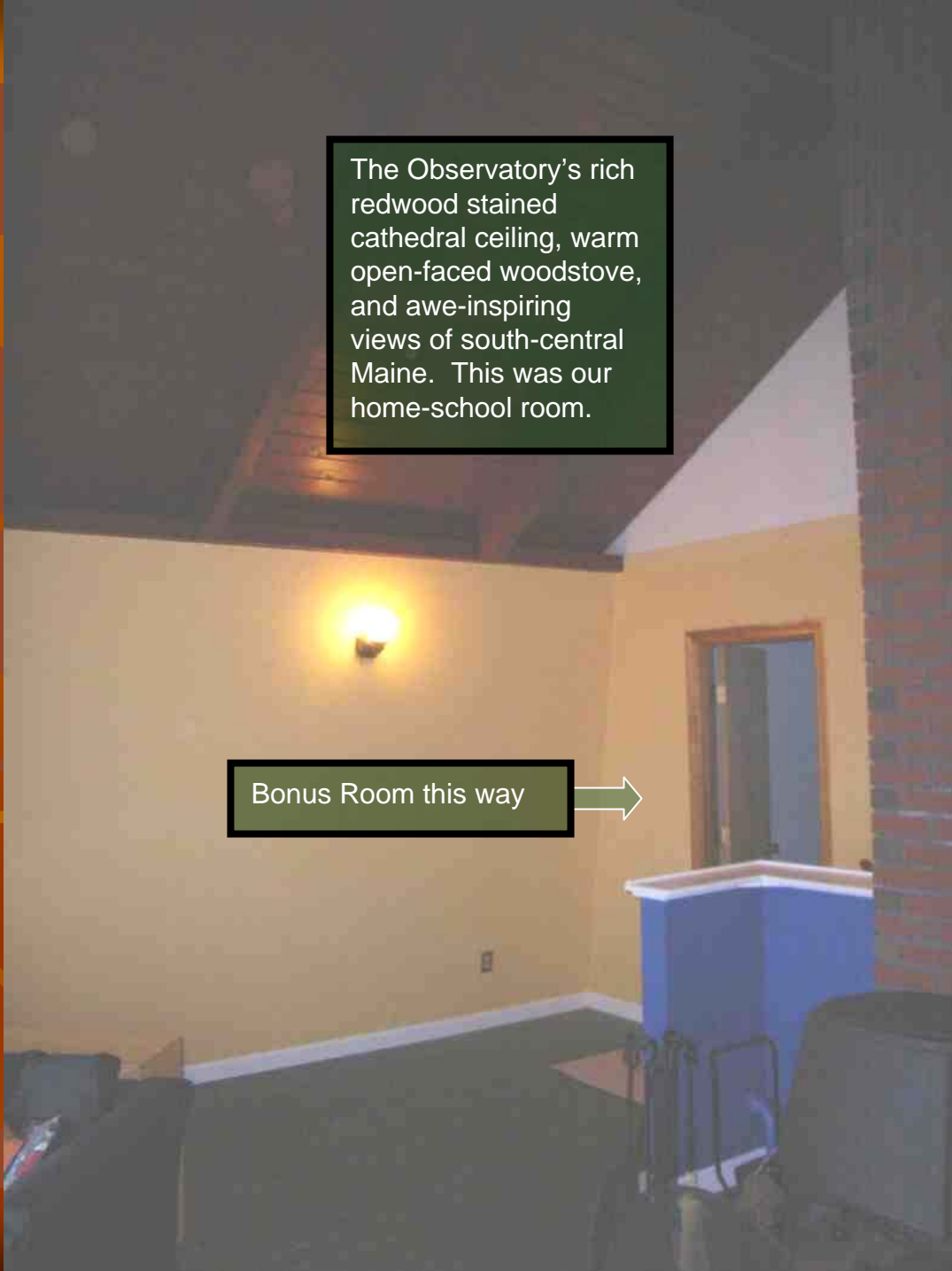


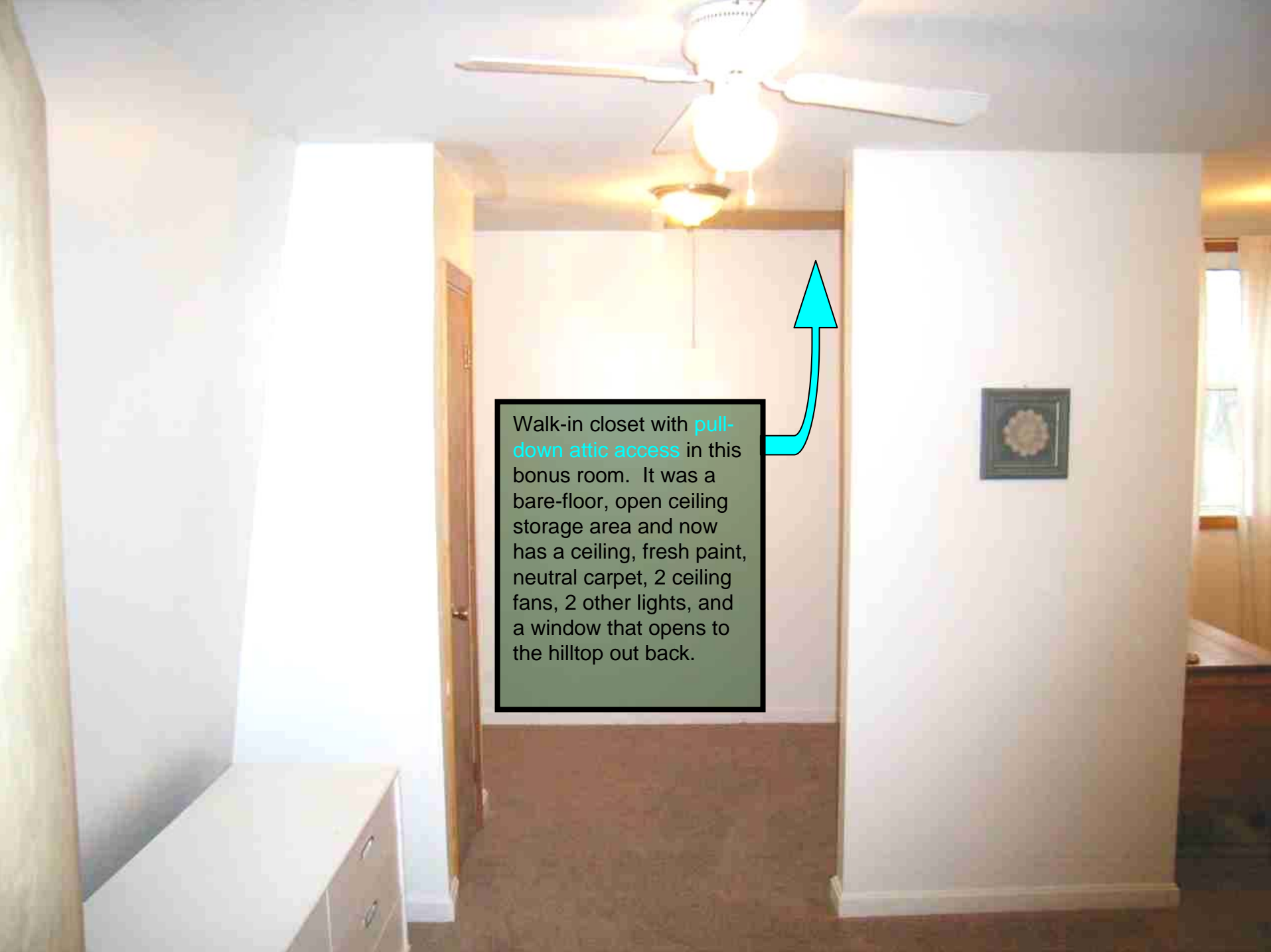




The Observatory's rich redwood stained cathedral ceiling, warm open-faced woodstove, and awe-inspiring views of south-central Maine. This was our home-school room.

Bonus Room this way







Walk-in closet with **pull-down attic access** in this bonus room. It was a bare-floor, open ceiling storage area and now has a ceiling, fresh paint, neutral carpet, 2 ceiling fans, 2 other lights, and a window that opens to the hilltop out back.



King size bed in bonus room to demonstrate size.



The Bonus Room's
walk-in closet
organizer



The Bonus Room window looks out over the backyard hilltop acreage.

BASEMENT


The mess has been removed, but I want to show the mechanical equipment and structure. The walls are form-poured concrete. The basement floor sits on the hilltop granite ledge – this house is literally and solidly built upon the rock.



The clutter went with the seller. The hook for pulling car motors and massive beam structure (4 married 2X10s) to support it remain.

Electrical service is rigged for a generator complete with an exhaust pipe. There is also a punch-down telephone terminal board. The two front casement windows are new.





This Kenmore built-in vacuum has ports on all four floors and a hose that reaches all the corners.

This Kenmore wood stove heats this whole house with less than 7 cord of firewood and burns 24" logs.



The Fuel Oil Tank is here, inside the basement for security and freeze protection.



That pump went out and was replaced with an in-ground stainless steel unit in 2004. The new tank was added to the old one (which is clean now) to increase capacity.



The well is here, inside the basement for security and freeze protection.





The chest freezer conveys.



The new in 2005 New Yorker brand high efficiency oil burner hot water baseboard heater and on-demand domestic water heater can heat the house and make hot water on about 750gal. a year (without burning wood) and ensures every shower is a hot shower without wasting money on a hot tank of water.

Again, the mess has been removed...

The background of the slide features a pattern of stylized autumn leaves in various shades of orange and brown, set against a darker brown background. The leaves are scattered across the frame, creating a warm and seasonal atmosphere.

THANK YOU

Please buy this beautiful place, and/or
send feedback to
providencelodge@oldsaltweb.com.